

# ON TIME

60 MINUTES OF EXPANDED CINEMA

A SERIES OF ONE HOUR WALK-IN ENVIRONMENT THROUGH TIME AND SPACE

A PROJECT CURATED BY  
WHAT ABOUT AGENCY



# ON TIME

ON TIME - an hour in the world's life

What happens at 12 o'clock pm (e.g.) all over the world? video analysis.

A travel all around the world clock, time zone included.

We observe and we are observed, conscious and unconscious.

Through discreet and indiscreet eyes of cams and cameras.

## Current Local Times Around the World

00:00 in ROME

08:00 in TOKYO

02:00 in ISTANBUL

20:00 in SAU PAULO

10:00 in SYDNEY

18:00 in NEW YORK

02:00 in NAIROBI

01:00 in JOHANNESBURG

04:30 in MUMBAI

15:00 in LOS ANGELES

17:00 in GUATEMALA CITY

19:00 in LA PAZ

02:30 in TEHRAN

06:00 in JAKARTA

20:00 in BUENOS AIRES

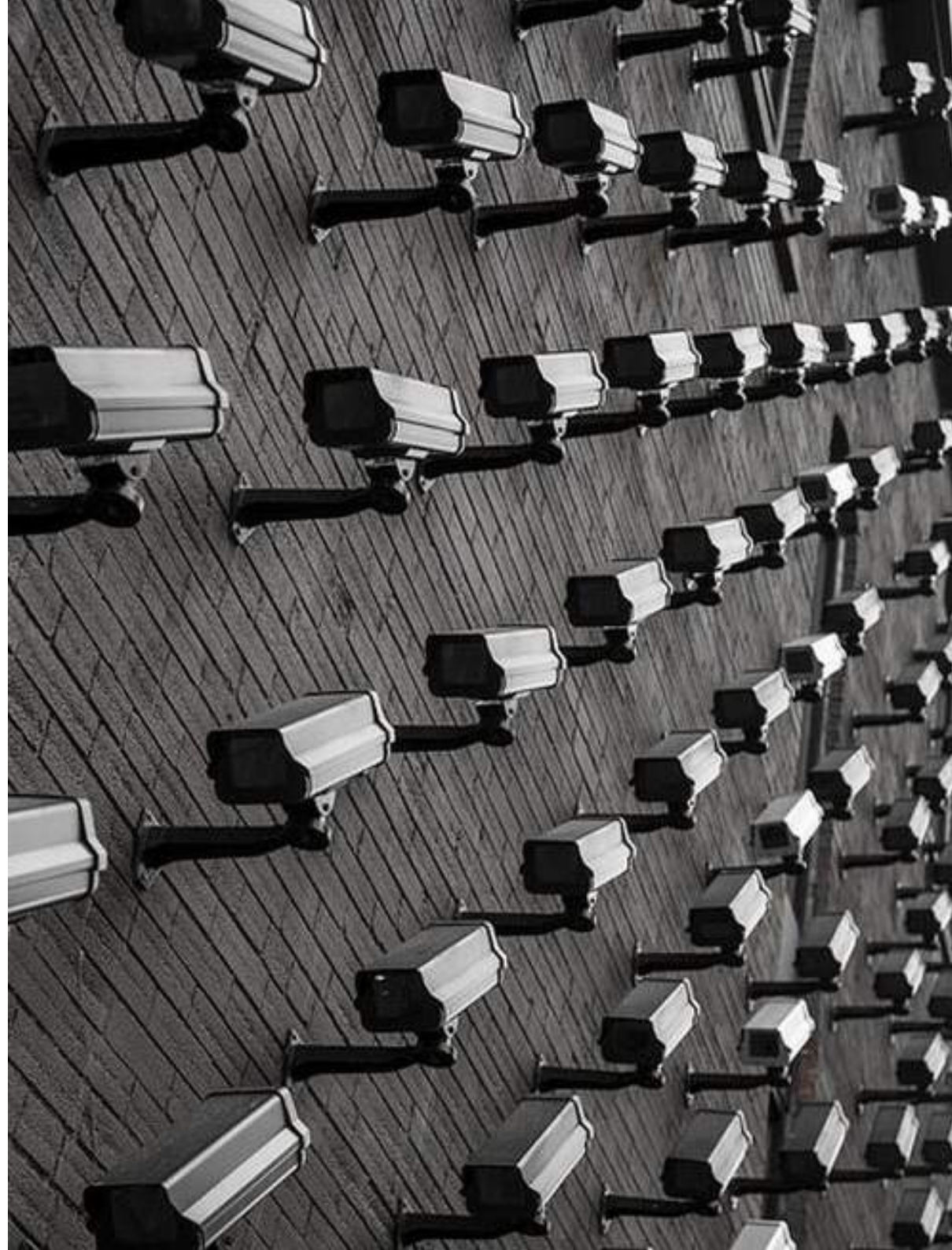
23:00 in CASABLANCA

18:00 in HAVANA

## INDEX:

---

- PROJECT DESCRIPTION
- SET-UP & TECHNICAL RIDER



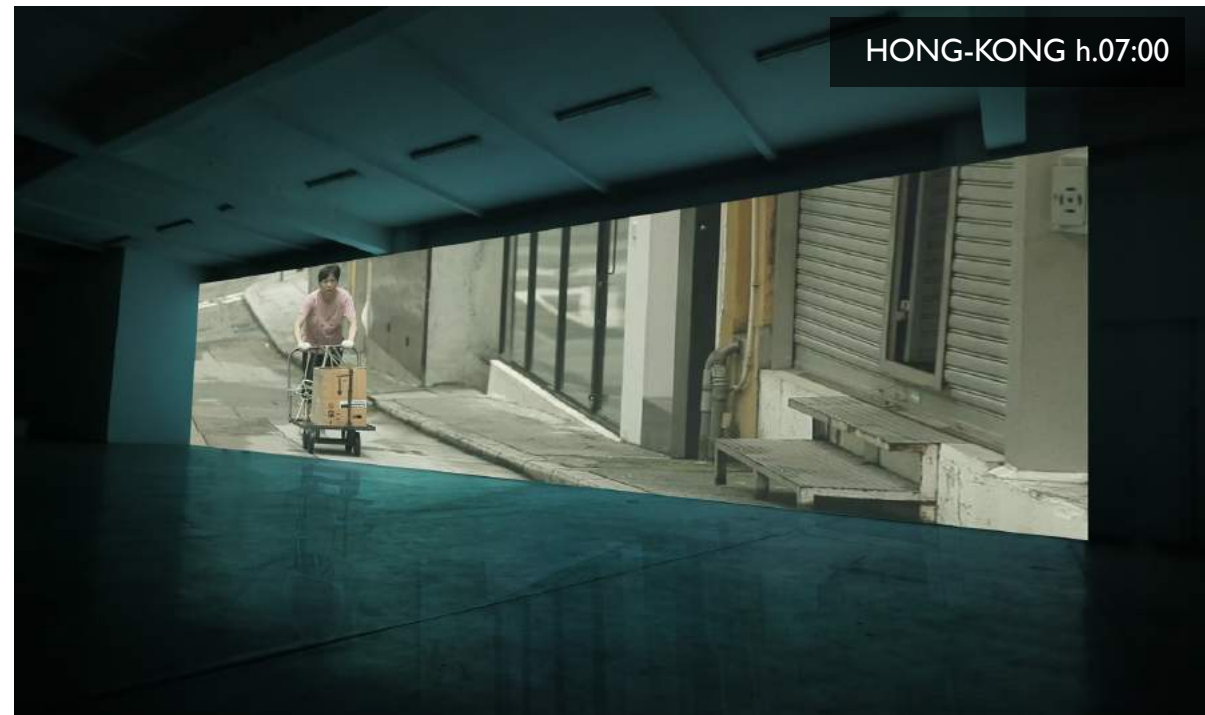
# ON TIME

## PROJECT DESCRIPTION

ON TIME, 60' - an hour of life in the world, can be described as a sensorial experience of expanded cinema, sound, and new media. A walk-in audiovisual installation that transforms the exhibition space into a multi-face projection film, creating an uninterrupted flow of visions and atmospheres where audience will time-travel in an instantaneous journey for one hour worldwide, where time zones across the planet reveal themselves simultaneously.

ON TIME, 60' allows us to lose our sense of being bound to the particular place we find ourselves in, by enabling us to travel through time and space. For one hour, we watch the world go by in its multitude of spaces, places and wonders.

In all the cities, people are eating, sleeping, playing, praying, working, traffic is busy or quiet, buildings and spaces are crowded or empty, or in transition. Everything becomes visible, everything is accessible, it is all shown, public, private and intimate space. We effortlessly navigate through various time zones to experience cities/places across the planet all at once.





# ON TIME

ON TIME 60' combines aware images of real life, to unaware image stolen by surveillance cameras. Cinematography is a combination of mixed video footage containing live streaming surveillance cam, pre-recorded webcam footage and film recorded at the same hour of the day.

The installation aims to reveal facets of a normal everyday life simultaneously, creating an overwhelming experience of 'the everything' contained in one moment.

In this walk-in audiovisual environment that explore fluidity as an aesthetic, audience will be pushed to challenge the boundaries of time, space, images.

By having access to a great variety of film footage, we are able to instantly create connections between places, which is something that lets us directly ponder on our human nature, on how, despite the current situation of alienation and cultural separation, we are all human, and maybe we are not all that different; or maybe we are...?



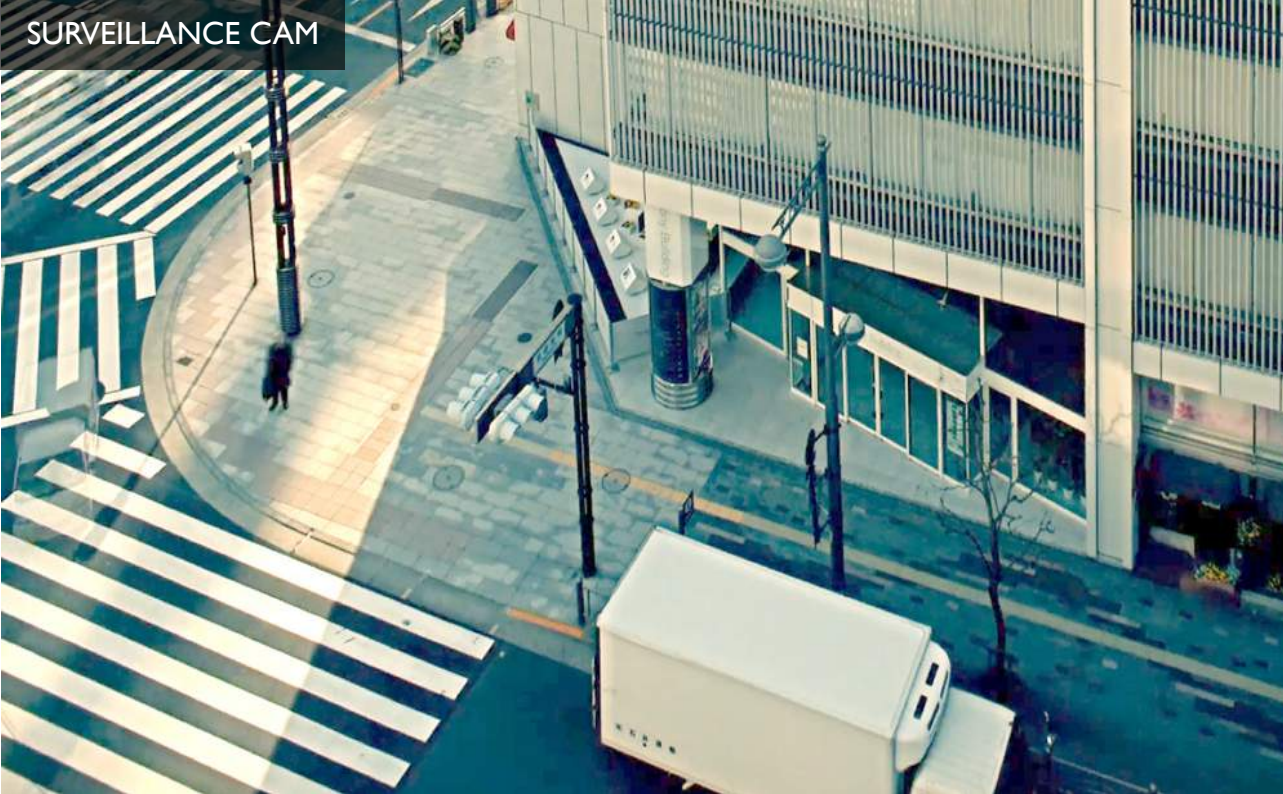


SURVEILLANCE CAM





SURVEILLANCE CAM





HAVANA h.18 :00



JAKARTA h.06:00



LA PAZ h.19:00



SÃO PAULO h.20:00



SYDNEY h.10:00



# ON TIME

## SET-UP & TECHNICAL RIDER

---

ON TIME would be very well suited for alternative performance spaces, such as museums, galleries, theatre, cinema, festivals...etc. The show would also work very well in public space and alternative cinematic settings as garages, hangar, building facade,,,etc.

The audience will face a large surface created by multi-projection (at least 3 beamers). This surface will act as a visual canvas for filmed sequences, alternating between a panoramic view and split screens to reveal simultaneous happenings.

The installation happens in the space of one hour; it is a durational live projection piece. Each performance will be recorded and stored as part of the ON TIME archive. After 24 performances with different films of different times of day life, there will be a full 24 hours of footage available.

This could potentially become a durational 24h installation.

One possibility would be for ON TIME to become a continuous, 24 hour long installation where viewers can come and go as they please. This would create 'a day in the life of the world' in its closest form. Second option, in a perfect world, would be to perform in the same space for 24 consecutive days, one hour later each day.

Some examples of possible suitable performance spaces can be found in the sketch at the end.





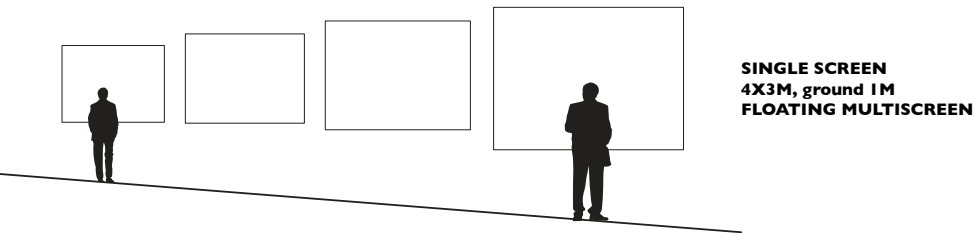
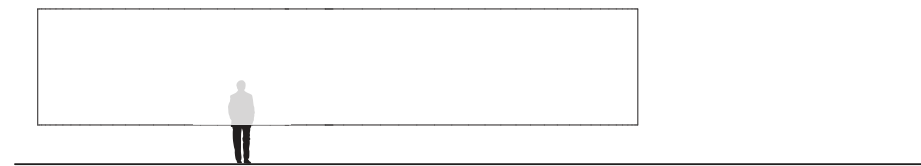
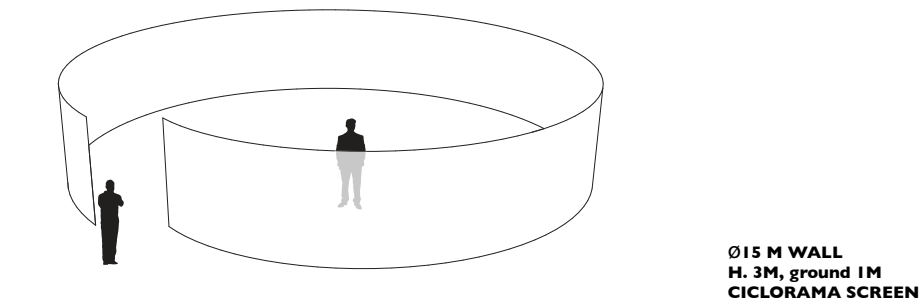
# ON TIME

60 MINUTES OF EXPANDED CINEMA





# POSSIBLE SET-UP



## TECHNICAL RIDER

- 3 PROJECTOR FULL-HD (min 3500ANSI)
- WALL SURFACE (min 10mt)
- 1 MATROX TRIPLE HEAD TO GO
- 3/6 SPEAKERS
- 1 SUBWOOFER
- 11 MULTIPLE EXTENSION
- 5 EXTENSION CABLES (3M )
- 5 EXTENSION CABLES (5M)
- 6 SPEAKER CABLES
- 12 EU-UK ADAPTERS
- 1 ANALOG 16CH MIXER

